

Bakewell St.
PO Box 26,
Cranbourne 3977

Ph: 5996 1744
Fax: 5996 1370

CRANBOURNE PRIMARY SCHOOL NEWSLINK

www.cranbourne-ps.vic.gov.au



Issue 4
February 29th 2012

Calendar

UPCOMING EVENTS

Preps commence school full-time

Monday March 5

Labour Day Holiday

Monday March 12

Photo Day

Thursday March 15

Last day of Term 1

Friday March 30

Awards

Special Assembly Monday 5 March

**2.20pm in the
Gym**

**School and House
Captains
announced**

Principal's News

As parents and carers within our school community, there are many ways you can help and support our school. If you have a Working with Children check, then you are able to help with activities and lessons in Learning Spaces, as well as attend excursions and camps. These are important roles within the school and add value to our learning and teaching opportunities.

Another significant way to support our school is to be a member of our School Council. The council is made up of parents and staff, and their role is to oversee the running and decision making that impact on the school. Meetings are held once a month, in the evening.

Discussions during School Council meetings can relate to finances, policies and programs, camps and excursions, external support organisations to utilise within our school, resources and facilities.

If you are interested in joining our School council, all you need to do is fill out the School Council Nomination form that we will send out to the school community shortly. If you have any questions about School Council, please come and speak to me.

Thank you to all of our families that supported the 'Meet and Greet' evening last Wednesday. It was great to see so many members of our community attending. Evenings such as these are a perfect opportunity for parents and staff to build positive relationships, to support the learning and development of all of our students. We hope to organise more events such as this during the year!

Our first PFA (Parents and Friends Association) meeting was held last night. It was great to see new parents attending as well as our "regulars". PFA works hard to organise fund raising events that support our school financially and they would love to see more parents joining. This year's efforts will help to fund improvements and upgrades to our school yard. If you are interested in being a part of PFA, contact the school office.

Cheryl Van Deursen (Principal)

Thought of the week -

"The only way to have a friend is to be one."

- Ralph Waldo Emerson

SCHOOL NEWS

From the Office

Student Birthdays

Sharni L.

David W.

Thushager S.

Happy Birthday to all the students who celebrate their birthdays this week



Stars of the Week

Congratulations on all your wonderful efforts this week!

Grade	Student	demonstrated
Prep	Manik S.	Persistence
Prep	Lincoln K.	Confidence
Junior LB	Brodie W.	Persistence
Junior MC	Dimitri P.	Responsibility
Junior HM	Hailey M.	Responsibility
Middle BA	Kaiya D.	Persistence
Middle MD	Hannah R.	Being Respectful
Middle NJ	Brodie T.	Being Organised
Middle MR	Natasha S.	Being Adaptable
Senior GA	Axel W.	Responsibility
Senior RP	Emily P.	Responsibility
Senior GR	Jamana P.	Being Articulate
Senior IW	Rhys Y.	Responsibility
Art	Connor C.	Creativity
P.E.	Chantal R.	Responsibility
Personal Dev't	M. Daniel (JMC)	Confident
Admin.	Rebecca N. (MMD)	Confidence
Leadership	Jordy D.(SIW)	Responsibility

ACCIDENT COVER

Please be advised that schools **do not** have health insurance for student accidents. If you do not have private health cover and you would like to establish insurance for your child, JUA provide a 24 hour, 7 day a week cover for \$21.00 for the year. You can contact them on 1800 252 264 or www.studenthealth.com.au

Photo order envelopes need to be returned to school on **'Photo Day'**.



This is **Thursday 15th March.**

CURRICULUM NEWS

It was pleasing to receive such positive feedback at our **'Meet and Greet'** last week. Many parents came to speak to Cheryl and me regarding the learning spaces and how well their child/ren had settled into the new learning environments.

The new learning spaces have meant changes for everyone and we are all investigating how to best use them to provide optimum learning opportunities for our students. Teachers are no longer working with one group of students, and having to accommodate a wide range of abilities within that group. Teachers are now planning, teaching and assessing students together. This means that teaching can be targeted at the needs of the students, and we can share the expertise of our staff to cater for a broader group of students.

Your support and patience during this process is greatly appreciated. We understand that the school looks, sounds and feels very different to what many of you remember about your own experiences at primary school.

Be assured that our goal remains the same – ***to ensure that all children are given every opportunity to achieve their personal best!***

If you have any questions about our learning spaces, please speak to your child's teacher or come and have a chat with me.

Di Fernand (Assistant Principal)

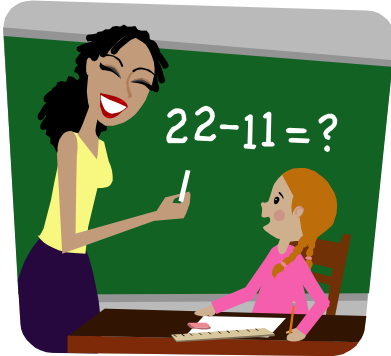
STUDENT NEWS

MIDDLE SCHOOL NEWS!



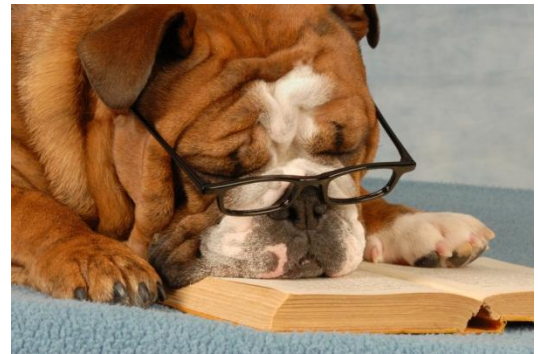
A lot has been happening in Middle School since the start of the year! It's a very busy time – setting up routines, learning to use our new space responsibly and learning all about the wonderful world around us. Things are a little bit different this year; let us tell you all about it!

MATHS



We are working in Maths Groups this year, spread across the 4 teachers in the learning space and Ms Donovan. We are focussing on Number, which means counting, place value, number patterns and the four operations.

LITERACY



In Reading we are running two different programs – Reading Groups and Literature Circles. Reading Groups focus on developing word recognition and fluency, and Literature Circles focusses on developing comprehension and text analysis. In Writing we are all working on Persuasive texts. It's fun trying to convince other people that we're right!

TOPIC



In Topic we are focussing on our place in the world. We are looking at our nation and the places and things that make it interesting and unique. We are also looking at how immigrants have changed our culture over time. How fascinating!



Thank-you to all the families who shopped at the Good Guys over the holidays and brought in their Cranbourne Cash vouchers – congratulations to those families who had members of their extended family also shop and collect vouchers.



Thank you to the families who continue to shop at Ritchies and use the benefit card. The school continues to receive donations from the fundraising program.

SCHOOL BANKING

School banking is every Friday



Parent & Friends Association (PFA)



Bunnings BBQ

(8.00am – 4.00pm)

We are in need of helpers to staff the stall at the Sausage Sizzle at Bunnings this Saturday 3rd March.

If you are able to donate some time to help please leave your details at the office and we will contact you.

Please come and support the school by buying a sausage on Saturday!

Hope to see you there!

**Thank you.
PFA.**