

PRINCIPAL'S NEWS

I hope all of our families enjoyed a wonderful long weekend and had the opportunity to spend some quality time together.

It has been another busy and exciting fortnight at Cranbourne Primary School. Our Grade 2 and Grade 4 students recently participated in the Cosmodome Incursion, and what an incredible experience it was! The learning spaces looked amazing, and students were immersed in a truly engaging and memorable exploration of space and science. A huge thank you to Mrs Wyatt for her organisation of the event in 2025, and to Mrs Jay and Ms Youssef for their wonderful work this year in bringing the experience to life for our students.

Our School Review is now underway, and we are delighted to have the opportunity to showcase the growth, achievements and progress our school community has made over the past four years. The review process also allows us to reflect on where we are now and begin planning for the next exciting chapter of Cranbourne Primary School's journey. We look forward to sharing more about this work with our community in the future.

Swimming lessons begin next week. To help the program run smoothly, please ensure your child comes to school with bathers underneath their uniform, along with a towel, fresh underwear and a spare pair of socks packed in their bag. Families are welcome to attend and watch the lessons. Please be aware that we operate to a very tight timeline between lessons and bus departures, so students will need to change back into their school uniforms with their classmates rather than joining family members after their session. If your child requires an exemption for medical, disability or accessibility reasons, please contact me to discuss appropriate arrangements.

On Monday, our Grade 3 students will be extending their learning about the environment through an exciting excursion to IMAX and the Melbourne Museum. Experiences such as these bring classroom learning to life and help students make meaningful connections with the world around them. Thank you to Mrs Shannon for her organisation of this wonderful opportunity.

As we approach the end of the term, I would also like to remind families that OSHC Vacation Care enrolments are now open. If you require care during the school holidays, please ensure bookings are made as soon as possible.

We are also pleased to share that the toilet refurbishment project remains on schedule. We are looking forward to returning in Term 3 to a fully reopened and refreshed facility for our students and staff.

Finally, our final assembly for the term will be held on Friday 19 June. We look forward to celebrating another fantastic term of learning, growth and achievement with our school community.

Thank you, as always, for your ongoing support of our students, staff and school. Together, we continue to make Cranbourne Primary School a wonderful place to learn, grow and belong.

Warm regards,
Krysten Andrews
Acting Principal



DATES TO REMEMBER

Fri 12th June	Winter Lightning Prem
Mon 15th June	Imax Excursion Grade 3
16th to 19th June	Whole School Swimming Program
Fri 19th June	Whole School Assembly 2:30pm
Fri 26th June	Last day of term 2 2:30pm finish
Mon 13th July	First day of term 3

2027 Prep Enrolments Now Open

Our 2027 Prep Enrolments are now open. If you have a child who is due to start school in 2027 please contact the office for more details.

School Tours are being held (by appointment only). If you know of any families who have a child due to start next year and would like to have a look around the school they can contact the office and book in a tour.

CHAMPIONS OF THE WEEK



Learning Community	Home Group	Student	
		Week 10—Term 1	Week 1 - Term 2
FOUNDATION	FA	Chloe	Bohdi
	FB	Dylan	Elijah
	JA	Awais	Peyton
JUNIORS	JB	Bo	Lukah
	JC	Sonny	Ali
	JD	Rayan	Logan
	MA	Ellena	Jasmine
MIDDLES	MB	Zack	Holli
	MC	Amaliah	Zhoey
	SA	Shakira	Patrick
SENIORS	SB	Daniel	Elisa K
	SC	Elisa K	Ayat
	PE	seyansa SC	Chandana MC
ART	Lincoln JC	Joshua FA	
CULTURAL STUDIES	-	Alexis JC	
AUSLAN	-	Dajah SC	
INTERVENTION	Ella Rose JA	Ashwin JD	

HAPPY BIRTHDAY

TO THE FOLLOWING STUDENTS WHO ARE CELEBRATING THEIR BIRTHDAY IN THE COMING WEEKS

Mohammad B

Scarlett B

Masih

Zack J

Rain

Lia

Marlee

Sarena

Lexi M



Coming Up at Cranbourne Primary.....

Monday 8th June KINGS BIRTHDAY PUBLIC HOLIDAY NO STUDENTS AT SCHOOL	Tuesday 9th June Permission & Payment due IMAX excursion - Grade 3	Wednesday 10th June	Thursday 11th June	Friday 12th June Winter Lightning Prem
Monday 15th June IMAX Excursion - Grade 3	Tuesday 16th June Whole School Swimming Program	Wednesday 17th June Whole School Swimming Program	Thursday 18th June Whole School Swimming Program	Friday 19th June Whole School Swimming Program Whole school Assembly 2:30pm
Monday 22nd June Push up Challenge	Tuesday 23rd June	Wednesday 24th June	Thursday 25th June	Friday 26th June Last day of Term 2 2:30pm Finish
Monday 29th June	Tuesday 30th June	Wednesday 1st July	Thursday 2nd July	Friday 3rd July
SCHOOL HOLIDAYS				
Monday 6th July	Tuesday 7th July	Wednesday 8th July	Thursday 9th July	Friday 10th July
SCHOOL HOLIDAYS				
Monday 13th July First day of Term 3	Tuesday 14th July	Wednesday 15th July	Thursday 16th July	Friday 17th July AUSLAN Visit Grades 3 to 6

2026 CSEF APPLICATIONS CLOSE AT THE END OF TERM 2

If you applied for CSEF (Camps Sports and Excursions Fund) through Cranbourne Primary School in 2025, you do not need to complete an application form in 2026 unless there has been a change in your family circumstances.

You only need to complete an application form if any of the following changes have occurred:

- new student enrolments; your child has started or changed schools and you did not apply through Cranbourne Primary School in 2025
- changed family circumstances; such as a change of custody, change of name, concession card number, or new siblings commencing at the school in 2026.

CSEF is available if you hold one of the following cards.



**2027 FOUNDATION
ENROLMENTS NOW OPEN**



CRANBOURNE PRIMARY SCHOOL

SMALL SCHOOL

BIG RESULTS!



Scan me!



THE

PUSH-UP CHALLENGE

3307 PUSH-UPS

OVER 24 DAYS

3-26 JUNE 2026

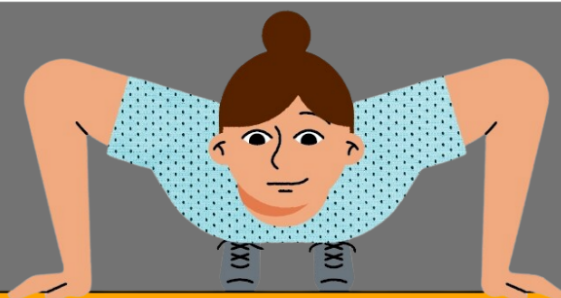
To help raise mental health awareness, Wellbeing and SRC would like to invite the whole community of Cranbourne Primary School to participate.

What is the push-up challenge?

The Push-Up Challenge is Australia's largest mental health and fitness event. Each year, hundreds of thousands of Australians take up the challenge to complete a set number of push-ups that represent the number of lives lost to suicide in Australia in the most recent year of available data (2024).

But what if I can't do a push-up!?

Not everyone is a push-up pro, so you can aim for half the amount or substitute push-ups with sit-ups, squats, etc.



The students will be engaged with our SRC in a variety of activities! Focused on:

- Checking in on a friend
- Understanding emotions
- Learning about self-care

Join the
Community or
Donate via the QR
code below



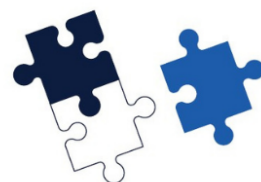
Any donations will go towards headspace National

If you or someone you know is struggling with a mental health crisis, please reach out to the following:

- **Lifeline 24/7 Crisis Service** - 13 11 14
- **Suicide Call Back Service** - 1300 659 467
- **Beyond Blue** - 1300 22 4636
- **MensLine Australia** - 1300 78 99 78
- **Kids Helpline (aged 5 - 25)** - 1800 55 1800



headspace
National Youth Mental Health Foundation



CRANBOURNE
PRIMARY SCHOOL



A SRC EVENT

THE
PUSH-UP
CHALLENGE



22ND JUNE 2026

COMPETE AGAINST OTHER LEARNING GROUPS WITH PRIZES TO BE WON!

**Wear something orange and get ready to put your game face on!
SRC will be running activities during Recess and Lunch... lookout for location announcements (either Oval or Gym dependant on weather)**





CRANBOURNE PRIMARY SCHOOL OSHC

! Winter Holiday Program 2026

WINTER EXPLORERS WEEK

MELBOURNE MUSEUM

Adventure!

TUESDAY 30 JUNE



STEP INTO A WORLD OF DISCOVERY!
A day of fun, learning and adventure awaits!

Join us for an exciting day of adventure as we visit Melbourne Museum! Children will explore fascinating exhibitions, discover dinosaurs, science, history and culture while enjoying a fun day out with friends.

EXCURSION DETAILS



LOCATION
Melbourne Museum



DEPART OSHC
Approximately 9:00am



RETURN TO OSHC
Approximately 3:30pm

*Times are approximate and may vary on the day.

IMPORTANT INFORMATION



- * Children must arrive at OSHC before departure.
- * Lunch is not provided.
- * All children must remain with their allocated group throughout the excursion.
- * Please ensure all belongings are clearly named.

WHAT TO BRING



Weather-appropriate clothing



Closed-toe shoes



Drink bottle



Morning tea



Lunch



Afternoon tea snack



Small backpack

~ A Day of Discovery Awaits! ~

♥ WE CAN'T WAIT FOR AN AMAZING DAY TOGETHER! ♥



CRANBOURNE PRIMARY SCHOOL OSHC

Winter Holiday Program 2026

★ COZY WINTER MOVIE WEEK ★

MOVIE Magic!

LIGHTS,
CAMERA,
ACTION!

★ EXCURSION ★

THURSDAY 9 JULY

POPCORN
Included!

Join us for a fun-filled trip to Village Cinemas Fountain Gate where we'll sit back, relax and enjoy the big screen experience with friends!

★ EXCURSION DETAILS ★



LOCATION

Village Cinemas
Fountain Gate



DEPART OSHC

Approximately
9:00am



RETURN TO OSHC

Approximately
1:00pm

*Times are approximate and may vary on the day.

★ WHAT TO BRING ★



Weather-appropriate clothing



Closed-toe shoes



Drink bottle



Lunch



Small backpack

★ INCLUDED ★



POPCORN
INCLUDED!

★ IMPORTANT INFORMATION ★



- ★ Children must arrive at OSHC before departure.
- ★ Lunch is not provided.
- ★ Movie selection will be age appropriate and confirmed prior to the excursion.
- ★ All children must remain with their allocated group throughout the excursion.
- ★ Please ensure all belongings are clearly named.



★ Sit back, relax & enjoy the show! ★



Computer Classes

FREE

Children Under Adult Supervision

Tuesdays
9:30 AM
to
1:00 PM



Contact

FOR EXPRESSION OF INTEREST

Email: shazia.khanum@education.vic.gov.au



**Community Hub, Cranbourne Primary School,
42 Bakewell St, Cranbourne Vic 3977.**



Lifeblood is coming to Cranbourne from 22 June to 3 July so, rock up to Cranbourne, roll up your sleeves and give blood.

Look for Lifeblood inside.

Book now by searching 'donate blood Cranbourne' or call 13 14 95.