

Bakewell St.
PO Box 26
Cranbourne 3977



PH: 5996 1744 FAX: 5996 1370
cranbourne.ps@edumail.vic.gov.au

NEWSLINK

www.cranbourne-ps.vic.edu.au

The teaching and learning pedagogy at Cranbourne Primary School is developed on a
RECIPE (Relevant Engaging Challenging Innovative Personalized Enjoyable)
based curriculum that supports the members of the school community to develop intrinsic
PRIDE (Persistence Responsibility Independence Discipline Enthusiasm) in their learning.

CALENDAR

UPCOMING EVENTS



Thursday June 25th
Footsteps Presentation

Friday, June 26th
Camp Sports &
Excursion Fund
Application Forms due
(eligible Health Care
Card holders only)

Friday, June 26th
Last day of Term 2
3:15 finish

Monday, July 13th
First day of Term 3

Friday, July 24th
Curriculum day-no
students at school

House Points

1st Childers
and Russell
2nd Bakewell
And Cameron

PRINCIPAL'S NEWS

Issue 19
24th June 2015

LEGACY

This week I was delighted and honoured to receive a letter from Ian Harrison, President of Legacy.

The following is a small extract from the letter,

'I am writing to thank the teachers and students of Cranbourne Primary School who were among the estimated 7000 people who attended the Legacy 84th ANZAC Commemoration Ceremony for students at the Shrine of Remembrance in Melbourne on 23 April 2015..... Legacy was honoured by the presence of the Governor of Victoria, the Hon. Alex Chernov ACQC, and the school students and their colourful school banners were the most important guests of honour on the day. This ceremony is the largest ANZAC ceremony staged particularly for Victorian school children.'

LIGHTNING PREM

Last Thursday, our senior students participated in the Lightning Prem sports. I would like to thank staff who attended on the day and spent the day not only supporting our students but fighting off the extremely cold weather conditions.

I Sea, I care program

Please read the insert written by our ambassadors following their excursion last week.



Cheryl Van Deursen
Principal

Quote of the Week

'The Earth does not belong to us:
we belong to the Earth'

-Marlee Matlin

BIRTHDAYS

25th June

to 15th July

Jaimee T, Alea M

Geri Liu, Manik S

Christian T, Kayla H

Coady T, Salaina F

Jacob D, Conner T

Dylan L, Indianna K

Seth B, Enari A

Grace W, Vithum S

**Happy Birthday
to those
students who
celebrate their
birthday this
week and over
the school
holidays!**



Stars of the Week

These students have demonstrated intrinsic

PRIDE (**P**ersistence, **R**esponsibility,
Independence, **D**iscipline, **E**nthusiasm)
in their learning.'

Learning community	Student
FOUNDATION	Agam M
	Bailey A
JUNIOR	Kaitlynn M
	Danish N
	Silas S
MIDDLE	Kynan G
	Avi S
	Cooper L
SENIOR	Savannah S
	Enari A
	Liam A
Art	Nathan S (MLB)
Physical Ed	Ebony H (MSG)
Assistant Principal	Emma F(JMD)Thomas M(SSL)
Principal	Angela, Courtney, Gabriel, Ryley

From the Office

*Eligible Healthcare
Card holders*

Applications for
Camps, Sports &
Excursion Fund
(CSEF) close on this
Friday, 26th June.

Please fill in
application form at
the office and bring
your eligible
Healthcare Card.

*Have a safe and
happy holiday!*

CPS BANK DETAILS

BSB 013 593

Account Number
499102494

*Please put your
child's name in the
subject line.*

Curriculum

Well the end of the term is here and what a busy term it has been!

Teachers have been busy learning and refining lots of new things to help improve the learning opportunities for our students.

Student reports were completed and sent home last week, reporting on student progress and opportunities for improvement.

Student Progress Discussions are currently taking place, providing opportunity for teachers and parents to discuss the progress and future learning goals of students.

Learning communities have been engaged in lots of great learning – with incursions and excursions to supplement the learning.

Grade 3 and Grade 5 students participated in Naplan.

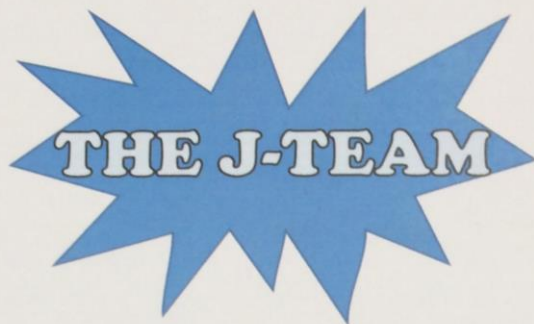
Students from Foundation – Grade 6 participated in Footsteps Dance Program.

Education Week saw our Open Morning and Evening, with many families visiting to see all of the great learning that has been happening.

Grade 5/6 students attended their City camp and did a LOT of walking and sightseeing!
And so much more!!

Thank you to everyone in the school community for their commitment to the learning that has taken place this semester. Have a safe break, and all the best to those families that are moving to another school over the term break.

**Di Fernand
Assistant Principal**



The J-Team is an afternoon kids club for Primary aged children (Prep - grade 4), running for 6 consecutive **Mondays**, each term, from **3:30 – 5:15pm** at St John's Anglican Church, 27 Childers St Cranbourne.

The term 3 programme will begin on **Monday 20th July**

The purpose is for kids to have fun after school and learn about the Christian faith through:

**Songs, Games,
Bible Stories & Craft**

Snacks/ Food provided (gold coin donation).

All children welcome.

Phone or email to register or enquire via Matt Scheffer at 5996 3896 curate.sjac@gmail.com or the church office 5995 9364 (Mon-Fri, 9am-12noon, school days)

St John's Anglican Church
27 Childers Street
Cranbourne
www.sjac.com.au

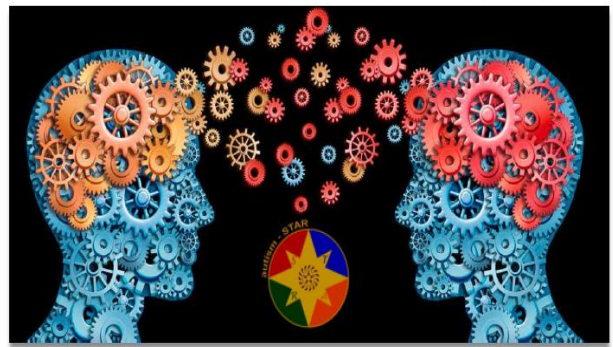


School Holidays

NAIDOC EVENT

Event Date: Wednesday, July 9, 2014 - 10:00
Cost of entry: FREE
Australia Garden, Royal Botanic Gardens,

UNDERSTANDING AUTISM



Discover New Perspectives
with Malcolm Mayfield

Thursday
18th June 2015
10AM – 2:30PM
REGISTRATION 9.30AM



Vines Road Community Centre

37-61 VINES ROAD
HAMLIN HEIGHTS

The *Understanding Autism* Workshop will give you a fresh perspective on what it means to be autistic.

It is understanding that bridges the gap between the autistic and neurotypical worlds and it is only through understanding that we can achieve true and harmonious integration.

Malcolm Mayfield was diagnosed with Asperger Syndrome in 2006.

He is a certified practitioner of Neuro Linguistic Programming, an experienced presenter and trainer, and co-author of the AAPC book *The Hidden Curriculum of Getting and Keeping a Job: Navigating the Social Landscape of Employment*.

Register now

<https://www.regonline.com.au/uageelong>

- \$25 - Parents, Carers, and Individuals on the Spectrum
- \$70 - Support workers
- \$120 - Professionals, Schools and Government



Enquiries:
malcolm@autism-star.com.au



No school banking this week!

School banking will resume the first Friday of next term.



There have been a couple of cases of CHICKEN POX reported - Keep an eye on your child/ren for spots



You're Invited!

Thursday 25th June, 2015

2.15—3.15pm

Come and join us for our last Footsteps Dance Session for 2015!

Students from Foundation - Grade 6 will be performing their dances.

Environmental awareness program

I sea, I care ambassadors

Angela, Courtney, Gabriel, Riley



Endeavour Hills

Gross Rubbish Catchment &
Eumemmering Creek at Frog
Hollow

Wednesday 17th June, 2015

At the Gross Rubbish Catchment in Endeavour Hills we learnt that there are 25 treatment chambers in the City of Casey. Each chamber collects up to 4 cubic metres of rubbish every 2 months, which has been stopped from going to Westernport Bay. The rubbish is taken by trucks to a holding area to dry out before being taken to the tip in Hallam.



A member of the City of Casey council spoke to us and told us that 90% of the living organisms found in Westernport bay cannot be found anywhere else in the world.



It was a tiring day . We stopped to have our lunch and snacks.

There were 10 other schools.

We are looking forward our next adventure in term 3 when we will visit Warneet.

We got to have a close up view of some of the macro organisms that got caught in a net out of the creek.

We saw shrimp, mosquito fish, a dragonfly and lots of debris (leaves and twigs)





We helped the 'friends of Frog Hollow' plant trees as an early start to National Tree Day, which is on Sunday 26th of July 2015.

If you are interested to help

<http://treeday.planetark.org/site/10007914>

Beleza

SCHOOL
UNIFORMS

Cranbourne Store:
126 High Street
T: (03) 5996 6881

BELEZA CRANBOURNE STORE TERM 2 SCHOOL HOLIDAYS TRADING HOURS

JUNE 2015

SUN	MON	TUES	WED	THURS	FRI	SAT
21 st CLOSED	22 nd NORMAL TRADING	23 rd NORMAL TRADING	24 th NORMAL TRADING	25 th NORMAL TRADING	26 th <u>LAST DAY OF</u> <u>TERM</u> 9am to 3pm	27 th CLOSED
28 th CLOSED	29 th 10am to 3pm	30 th 10am to 3pm				

JULY 2015

			1 st 10am to 3pm	2 nd 10am to 3pm	3 rd 10am to 3pm	4 th CLOSED
5 th CLOSED	6 th NORMAL TRADING	7 th NORMAL TRADING	8 th NORMAL TRADING	9 th NORMAL TRADING	10 th NORMAL TRADING	11 th NORMAL TRADING

* Normal Trading Hours: Mon to Fri
Sat

9:00am to 5:00pm
9:00am to 1:00pm

SHOP ONLINE 24/7 at store.beleza.com.au