

Bakewell St.  
PO Box 26  
Cranbourne 3977



PH: 5996 1744 FAX: 5996 1370  
cranbourne.ps@edumail.vic.gov.au

# NEWSLINK

[www.cranbourne-ps.vic.edu.au](http://www.cranbourne-ps.vic.edu.au)

*The teaching and learning pedagogy at Cranbourne Primary School is developed on a  
**RECIPE** (Relevant Engaging Challenging Innovative Personalized Enjoyable)  
based curriculum that supports the members of the school community to develop intrinsic  
**PRIDE** (Persistence Responsibility Independence Discipline Enthusiasm) in their learning.*

## CALENDAR

### UPCOMING EVENTS



#### Tuesday February 24<sup>th</sup>

Jolly Bops Science  
incursion

#### Wednesday March 11<sup>th</sup>

St Johns incursion

#### Wednesday March 18<sup>th</sup>

3-6 district athletics

#### Friday March 20<sup>th</sup>

Multicultural day

#### Monday March 23<sup>rd</sup>

Middle School Camp

#### Friday March 27<sup>th</sup>

LAST DAY OF TERM 1

#### Monday 13<sup>th</sup> April

START OF TERM 2

#### Friday April 24<sup>th</sup>

School Photographs

## PRINCIPAL'S NEWS

Issue 3  
18<sup>th</sup> February 2015

We would like to congratulate the following  
students who were elected as student  
leaders for 2015.

### School captains:

Thomas Mc And Hannah R

### House captains:

BAKEWELL - Shahid S and Savannah S

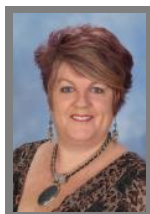
CAMERON - Bailey I and Halle G

CHILDERS - Brodie T and Tarra Jay J

RUSSELL - Ronan E and Chloe I

### Junior School Council:

Liam W, Kyana Z, Maali A, Summer L,  
Leon L, Vithum S and Khiem Nguyen.



**Cheryl Van Deursen**  
**Principal**

## House Points

There are no  
house points  
this week.

### Quote of the Week

'Congratulations to 2015 student leaders'

## BIRTHDAYS

4<sup>th</sup>-17<sup>th</sup> February  
Happy Birthday to  
those students who  
celebrate their  
birthday this  
fortnight.



Bianca E.  
Dhiyana M.  
Halle G.  
Nary N.  
Riley B.  
Monroy M.  
Rhyley K.  
Hannah R.  
Tai W.  
Dante B.  
Connor C.  
Noah I.  
Matteo C.

## Stars of the Week

*These students are 'developing intrinsic **PRIDE***  
(**P**ersistence, **R**esponsibility, **I**ndependence,  
**D**iscipline, **E**nthusiasm) *in their learning.*

| Learning community | Student         |
|--------------------|-----------------|
| FOUNDATION         | Tehaamaru T.    |
|                    | Hayley F.       |
| JUNIOR             | Tai C.          |
|                    | Vena N.         |
|                    | Tristan L.      |
| MIDDLE             | Ceejay S.       |
|                    | Joshua L.       |
|                    | Bryson L.       |
| SENIOR             | Rebecca N.      |
|                    | Vithum S.       |
|                    |                 |
| Art                | Hannah R. (SMD) |
| Physical Ed        | Tangi E. (MLB)  |
| Ass't Principal    | Joseph K (SBP)  |
| Principal          | Josh L. (MLB)   |

## FROM THE OFFICE

At the end of this term we will no longer be printing out and distributing newsletters to our youngest students. We ask that all families visit our website at [www.cranbourne-ps.vic.edu.au](http://www.cranbourne-ps.vic.edu.au) and subscribe to the newsletter which will then be sent to you electronically. The link is on the home page and the process only takes a minute or two.

NEWSLETTER



[Subscribe to Newsletter](#)

## CURRICULUM

Yesterday, the staff at CPS was involved in a Curriculum Day. Each year schools organise professional development opportunities that help support the learning and teaching within the school. Schools identify areas for improvement, specific to their students' learning needs and access professional consultants or organisations to provide the educational growth and development required.

Our Curriculum Day yesterday was focussed on Literacy, in particular, developing oral language and reading skills of our students. We investigated a program called "CAFÉ" which is an acronym for Comprehension – Accuracy – Fluency – Expand vocabulary. This approach brings many tried and tested strategies together, and helps teachers to identify specific areas of reading that students need to address.

It was a very busy day, and all staff members are keen and enthusiastic to implement the ideas and strategies discussed.

### What does all of this mean for the students?

Students from Foundation (Prep) – Grade 6 will be completing daily reading time in their learning communities. Teachers will be holding conferences with students to check on their progress. Students will continue to be grouped for formal Guided Reading sessions, according to their specific learning needs. Teachers will be including more opportunities to develop Oral Language skills of the students. Our expectations for the students are high. We want all of our students to recognise and appreciate that reading is an essential lifelong skill, as well as to develop an enjoyment of reading.

All students will be required to complete reading practice at home, using "Just Right" books (books that are at the child's reading level). Take Home Reading will commence early in March. As I mentioned last week, students should still be reading at home, using appropriate reading materials that are accessible at home.

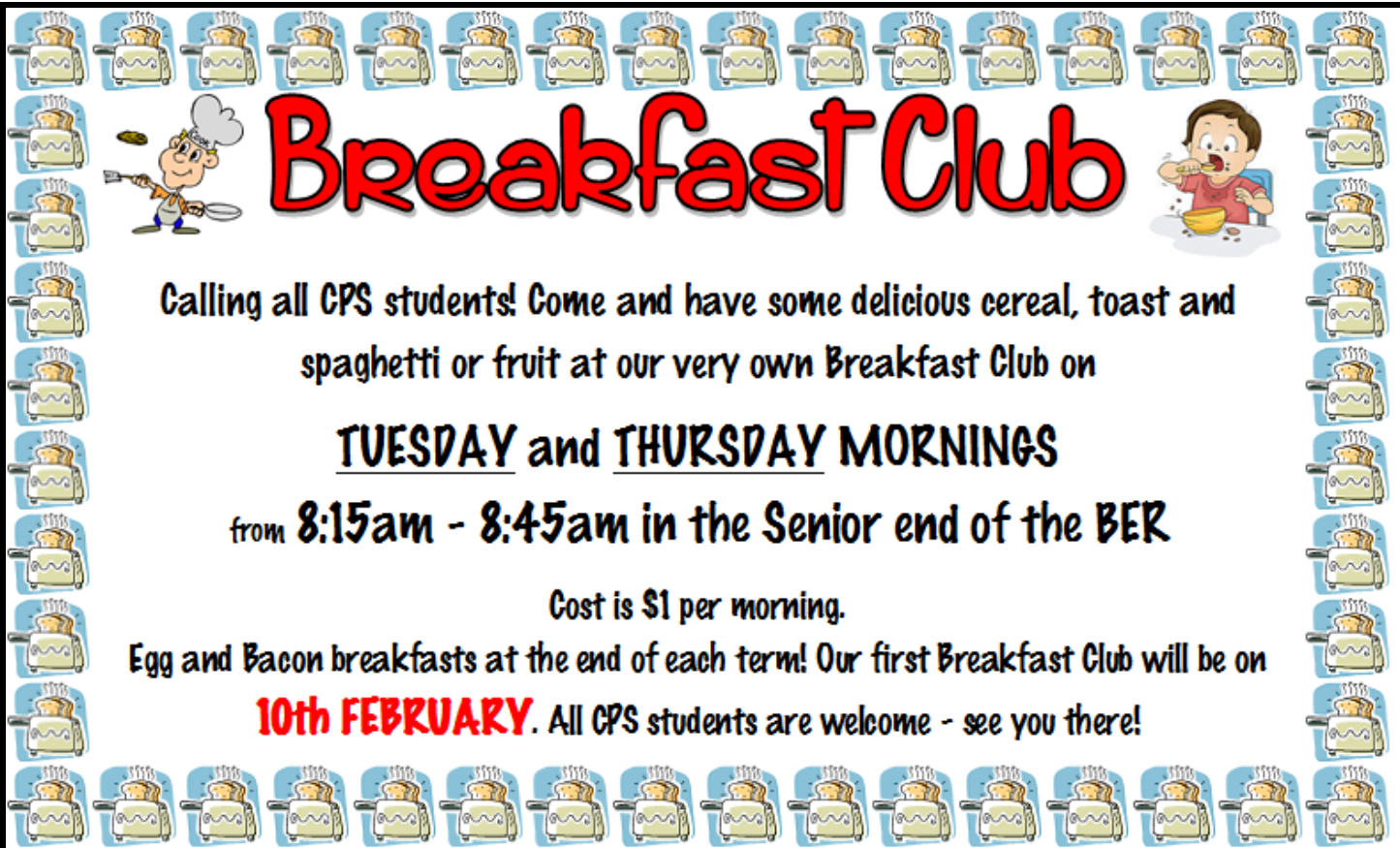
**Di Fernand**  
**Assistant Principal**

# COMMUNITY EVENT

## TWILIGHT SPORT/MEET & GREET







## **SCHOOL COUNCIL**

School council elections.

Each year, we invite parents to join CPS School Council. This is an opportunity for parents to have input into the development of school policies and programs, ensuring we are meeting the needs of all of our students.

If you are interested in being a part of the School Council for 2015, please come and speak to me, and collect a Nomination form. Forms will be available from the office.

Cheryl Van Deursen

Thinking about re-entering the work force but not sure where to begin?  
Look no further TBM Training offer a wide range of nationally recognised qualifications.  
For more information check out our website: [www.tbmtraining.com.au](http://www.tbmtraining.com.au)  
Or call our office on: 03 5995 3344

Just a reminder:

The school canteen **will not** be operating this year;  
however we will occasionally hold a special lunch order  
day. Notices for these days will be sent home via your  
child's classroom teacher.