

Bakewell St.
PO Box 26
Cranbourne 3977



PH: 5996 1744 FAX: 5996 1370
cranbourne.ps@edumail.vic.gov.au

NEWSLINK

www.cranbourne-ps.vic.edu.au

The teaching and learning pedagogy at Cranbourne Primary School is developed on a
RECIPE (Relevant Engaging Challenging Innovative Personalized Enjoyable)
based curriculum that supports the members of the school community to develop intrinsic
PRIDE (Persistence Responsibility Independence Discipline Enthusiasm) *in their learning.*

CALENDAR

UPCOMING EVENTS



Friday March 13th

Book club orders due in

Wednesday March 18th

3-6 district athletics

Thursday March 19th

Payment due for middle school camp.

Friday March 20th

Multicultural day

Monday March 23rd

Middle School Camp

Friday March 27th

LAST DAY OF TERM 1

Monday 13th April

START OF TERM 2

Friday April 24th

School Photographs

Wednesday May 20th

Senior Camp

PRINCIPAL'S NEWS

Issue 6
11th March 2015

ASSESSMENT OF STUDENT PROGRESS

Assessment of student progress is an ongoing process, which occurs every day at school. Teachers are constantly evaluating student progress to determine their next step for learning.

The staff members within our learning communities collaborate each week to discuss the content of what students are learning.

Whilst the school provides two formal written reports on student progress each year, there are other forms of assessments and reports throughout the year.

Students in Foundation have a school readiness assessment before they commence the school year.

Students in Foundation to year 2 have a formal on line assessment through a DET website, called English online.

Students in grade 3 to 6 participate in an online assessment tool called On Demand, which is used by teachers to assist in their evaluations and development of learning goals.

Children in grade 3 and grade 5 participate each year in the National Assessment Program (NAPLAN). Students are assessed using the same test across Australia in Literacy (*reading, writing, spelling, grammar & punctuation*) and Numeracy. Included in today's newsletter is an information sheet regarding Naplan for parents of students in grade 3 & 5.



Cheryl Van Deursen
Principal

House Points

1st Russell

2nd Childers

3rd Cameron

4th Bakewell

Quote of the Week

'Through self-reflection, we can determine our own progress'

BIRTHDAYS

11th -17th March
Happy Birthday to
those students who
celebrate their
birthday this week.



Liam W
Leon L
Niduka R
Josh M

Stars of the Week

*These students are developing intrinsic **PRIDE***
(**P**ersistence, **R**esponsibility, **I**ndependence,
Discipline, **E**nthusiasm) *in their learning.'*

Learning community	Student
FOUNDATION	Udan L.
	Maggie K.
JUNIOR	Maali A.
	Johnathan R.
	Tarryn B.
MIDDLE	Tangi E.
	Chronix T.
	Montaya F.
SENIOR	Chloe I.
	Shahid S.
	Hamiora W.
Art	Seth B. (JCM)
Physical Ed	Jacob D. (MLB)
Ass't Principal	Lauren (FSP)
Principal	Sunny (JMD)

FROM THE OFFICE

Please note that all the available spaces for the 5\6 camp have been filled. For those people who have paid their deposits, final payments must be made by May 7th.

Grade 3-4 camp all money must be paid by Thursday March 19th.

Just a reminder, that the student books and contributions payment should have been finalised by now. If you have not done so, or are having difficulties paying please contact the school office.

CURRICULUM

Planning Week.

Next week there will be some minor changes to the daily routine for students at CPS. Learning communities have been allocated a planning day, where home group teachers will not be teaching in the learning community on their particular day.

Students within each learning community will still have access to specialist lessons, which will take place on their designated planning day, as well as their regular Reading and Writing or Maths sessions.

Providing a planning day for each team of learning community teachers enables the team to work together, uninterrupted, to plan curriculum for the following term.

It also provides teachers with an opportunity to examine assessment data, to assist with the planning of student groups for the start of the following term.

Teachers will also have the opportunity to undertake professional reading, peer discussions, and organise events for term 2, on their planning day.

If your child becomes anxious or frets when there is a change to their routine, it may be beneficial to start discussing this change to their routine prior to their allocated day. Please refer to the table below.

Planning Week Timetable	
Monday 16 th March	Middle Learning Community (Grades 3 & 4) Planning Day
Tuesday 17 th March	Junior Learning Community (Grades 1 & 2) Planning Day
Wednesday 18 th March	Foundation Learning Community (Preps) Planning Day
Thursday 19 th March	Senior Learning Community (Grades 5 & 6) Planning Day

Di Fernand
Assistant Principal

Visual Arts



2



3

Juniors featured:

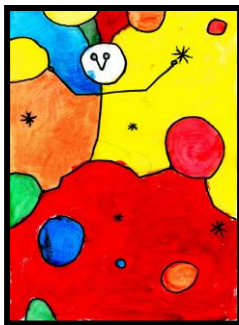
1. Matteo (FER)
2. Hayley (FER)
3. Buthmi (FSP)
4. Johnny (JBA)
5. Itaf (JTK)
6. Tarryn (JTK)

5

4



7



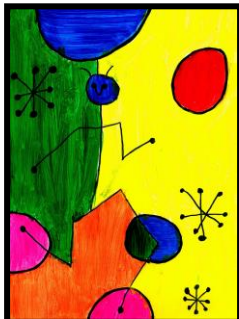
8



9



6



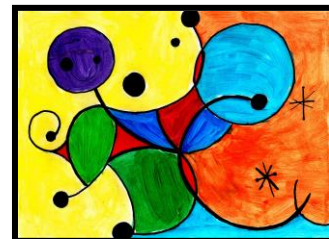
10



11



12



13

Middles & Seniors featured:

7. Daniel (MSG)
8. Caitlyn (MTB)
9. Latoya (MTB)
10. Michaela (MTB)
11. Jordan (SMD)
12. Halle (SBP)
13. Hannah (SMD)

This semester in Visual Arts, students have been focussing on using lines in their artworks. Foundation students have been exploring different lines, using zig-zags, curls and straight lines to create colourful pieces. Junior students have been creating artworks that include the use of horizontal, vertical and diagonal lines. Students in the Junior grades have also been learning about the primary colours – red, blue and yellow – and the difference between warm and cool colours. Middle and Senior students have explored the works of Spanish artist Joan Miro and observed how he used block colours and symbols to create pieces that explored emotion and feeling. Students then used this knowledge to create their own pieces based on Miro's work. All students have made a great start to the year and should be proud of the progress they are making!

Miss Radford – Visual Arts

CHIPS EXCURSION

Last Wednesday, all house captains went to Lysterfield Park for the CHIPS leadership excursion. We had the opportunity to go sailing, mountain biking and billycart riding. Captain Eric guided us throughout the excursion.

Once we finished all of our activities we were told many stories of the area. Later we learned how to use an army GPS. We used the co-ordinates to find dinosaurs by the lake.

‘It was an amazing experience’ –Shahid

‘We had a fantastic time.’ -Savannah

